



**SIGNAL
EXPERT
GLOBAL**
Passion for Excellence

COMEX RESEARCH REPORT

SIGNAL EXPERT GLOBAL LLP

DATE – 30 DEC 2024



SIGNAL EXPERT GLOBAL LLP

Address

D1, HIG COLONY,

1st Floor Behind Shopping Complex,

AB Road, Indore (M.P.)

Email - info@signalexpertglobal.com

Passion For Excellence

Contact us at :
info@signalexpertglobal.com



**SIGNAL
EXPERT
GLOBAL**
Passion for Excellence

COMEX RESEARCH REPORT

SIGNAL EXPERT GLOBAL LLP

DATE – 30 DEC 2024

STOCK INDICES

INDICES	CURRENT	% CHG
DOW JONES	42,976.99	-0.81
NASDAQ	19,718.09	-1.51
DAX	19,984.32	0.68
FTSE	8,149.78	0.16
NIKKEI	40,281.16	1.77

WEEKLY SUPPORT AND RESISTANCE

CURRENCY	SUP.2	SUP.1	PIVIOT POINT	RES.1	RES.2
XAUUSD	2555	2582	2624	2668	2710
XAGUSD	27.04	28.15	29.50	30.70	32.40
EUR/USD	1.0230	1.0330	1.0430	1.0530	1.0630
GBP/USD	1.2300	1.2470	1.2570	1.2620	1.2730
CRUDE OIL WTI	67.40	68.80	70.40	71.50	72.78

Passion For Excellence

Contact us at :
info@signalexpertglobal.com



**SIGNAL
EXPERT
GLOBAL**
Passion for Excellence

COMEX RESEARCH REPORT

SIGNAL EXPERT GLOBAL LLP

DATE – 30 DEC 2024

NEWS

Gold price holds losses despite safe-haven demand amid market caution- Gold price (XAU/USD) edges lower amid thin trading following the Christmas holiday, trading near \$2,630 during the Asian session on Friday. However, the safe-haven asset could find upward support as markets anticipate signals regarding the [United States](#) (US) economy under the incoming Trump administration and the Federal Reserve's (Fed) interest rate outlook for 2025. Gold, a non-yielding asset, gains traction as moderate US PCE inflation data challenges expectations of limited [Fed](#) rate cuts next year, hinting at the possibility of more reductions. The safe-haven appeal is bolstered by heightened geopolitical risks stemming from the prolonged Russia-Ukraine conflict and ongoing tensions in the Middle East. The precious metal is on track to close the year with an impressive 27% gain, marking its best annual performance since 2010. This surge has been fueled by central bank purchases, escalating geopolitical uncertainties, and monetary easing by major central banks.

Gold price receives downward pressure as US Dollar edges higher

- The US Dollar Index (DXY), which measures the value of the US Dollar (USD) against its six major peers, trades above 108.00, slightly below its highest level since November 2022. Any further strengthening of the Greenback could limit the upside of the dollar-denominated precious commodities like Gold, as a stronger USD makes these assets more expensive for holders of other currencies.
 - However, the non-interest-bearing Gold may receive support as US Treasury bond yields remain subdued on Friday. 2-year and 10-year yields stand at 4.33% and 4.58%, respectively, at the time of writing.
 - On Thursday, Russia's Federal Security Service announced that it had thwarted multiple assassination plots by Ukrainian intelligence targeting high-ranking Russian officers and their families in Moscow. The agency stated that the attacks were planned using bombs disguised as power banks or document folders, according to Reuters.
 - Meanwhile, Gaza authorities reported that an Israeli airstrike killed five Palestinian journalists. However, the Israeli military claimed that the individuals were members of Islamic Jihad posing as media workers. Medics reported that the five were among at least 31 people killed in Israeli airstrikes across the Palestinian enclave.
- Last week, the Federal Reserve signaled a more cautious outlook for additional rate cuts in 2025, marking a shift in its monetary policy stance. This development highlights uncertainties surrounding future policy adjustments amid the anticipated economic strategies of the incoming Trump administration.

Crude Oil are sprinting higher with key US inventory data on deck-

At 15:30 GMT, the Energy Information Administration (EIA) will release its weekly Gas Storage Change number. The previous week's storages stood at 125 billion cubic meters.

- At 17:00 GMT, the EIA will release the Crude Oil stockpile change numbers. The expectation is for a draw-down of 2 million barrels against the previous drawdown of 0.934 million barrels.
- On Tuesday, the weekly US American Petroleum Institute (API) stockpile data showed a draw of 3.2 million barrels, lower than the 4.7 million decline seen a week earlier.

At 18:00 GMT, the Baker Hughes Oil Rig Count will close off this Friday. No forecast is available, with the previous reading at 483 rigs operational.



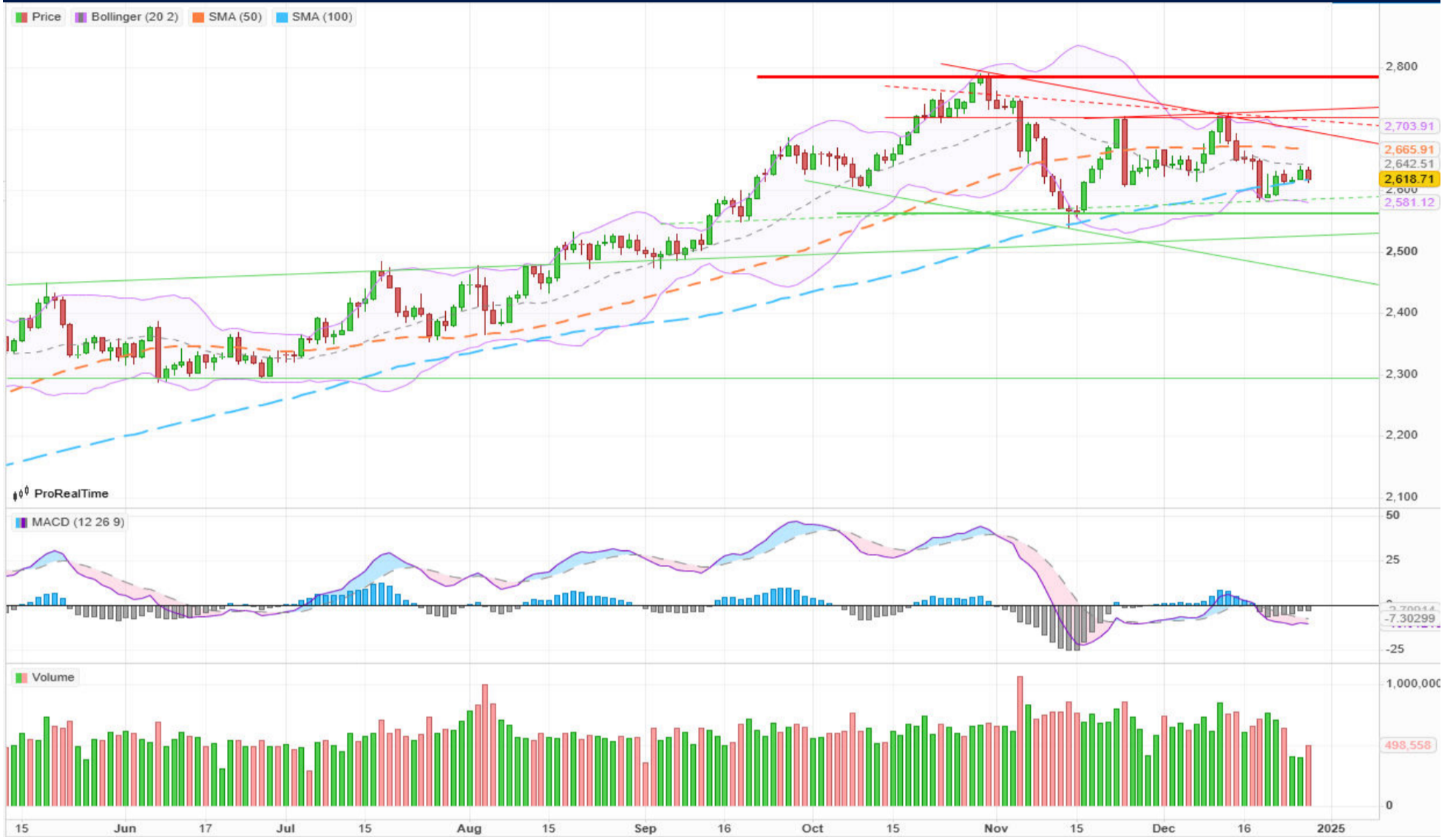
**SIGNAL
EXPERT
GLOBAL**
Passion for Excellence

COMEX RESEARCH REPORT

SIGNAL EXPERT GLOBAL LLP

DATE – 30 DEC 2024

TECHNICALS TIPS



XAUUSD:

Gold price remains below \$2,650 with testing 14- and nine-day EMAs

Gold price trades above \$2,630.00 on Friday, with the daily [chart](#) indicating a consolidation phase as the metal moves sideways near the nine- and 14-day Exponential Moving Averages (EMAs). The 14-day Relative Strength Index (RSI) hovers just below the 50 mark, reflecting a neutral sentiment. A decisive move above 50 could signal increased buying interest in the commodity.

On the upside, the XAU/USD pair may target the psychological level of \$2,700.00, with the next resistance at its monthly high of \$2,726.34.

The 14- and nine-day EMAs at \$2,631.40 and \$2,627.44, respectively, act as the immediate support for the XAU/USD pair. A break below these levels could increase selling pressure, potentially pushing Gold toward its monthly low of \$2,583.39.

Passion For Excellence

Contact us at :
info@signalexpertglobal.com



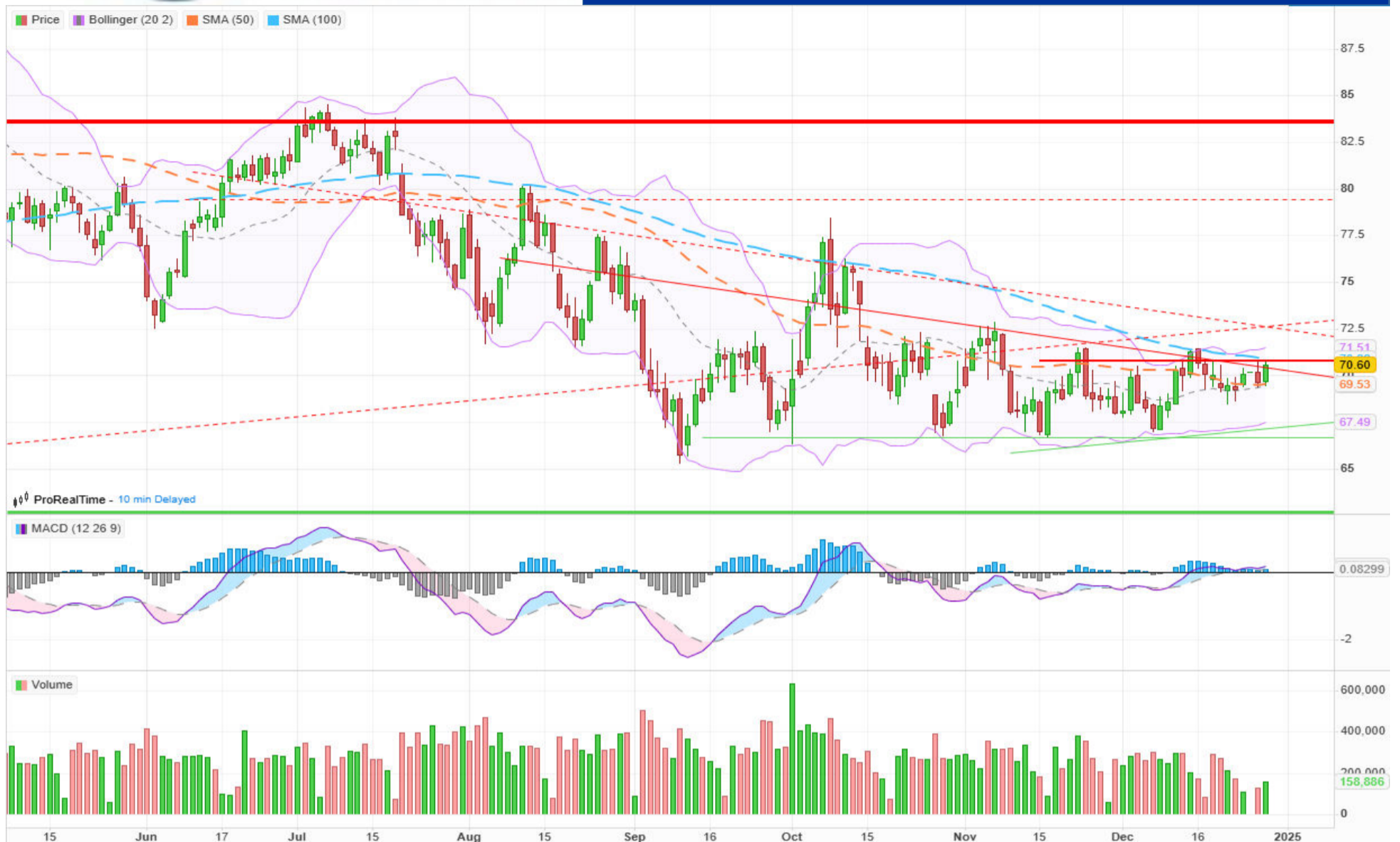
**SIGNAL
EXPERT
GLOBAL**

Passion for Excellence

COMEX RESEARCH REPORT

SIGNAL EXPERT GLOBAL LLP

DATE – 30 DEC 2024



CRUDE OIL WTI-

Crude Oil price action could be an outlier on Friday as other assets are fully into the Christmas market lull. With still some key data points to digest, Oil traders will need to be on point because there will be a very limited window of opportunity to trade. Expect to see some brief volatile moves, although any possible rally will lack fundamentals to extend into 2025.

Looking up, the 100-day Simple Moving Average (SMA) at \$70.59 and \$71.46 (February 5 low) act as firm resistance levels nearby. Should more tailwinds emerge in support for Oil, the next pivotal level will be \$75.27 (January 12 high). However, watch out for quick profit-taking as the year-end quickly approaches.

On the downside, \$67.12 – a level that held the price in May and June 2023 and during the last quarter of 2024 – is still the first solid support nearby. In case that breaks, the 2024 year-to-date low emerges at \$64.75, followed by \$64.38, the low from 2023.

Passion For Excellence

Contact us at :
info@signalexpertglobal.com



**SIGNAL
EXPERT
GLOBAL**
Passion for Excellence

COMEX RESEARCH REPORT

SIGNAL EXPERT GLOBAL LLP

DATE – 30 DEC 2024

DAILY MAJOR ECONOMIC EVENT

PARTICULARS	TIME	FORECAST	PREVIOUS	CURRENCY
30 DECEMBER 2024				
Spanish Flash CPI y/y	1:30PM	2.6%	2.4%	EUR
GDP m/m	8:15PM	42.7	40.2	USD
Pending Home Sales m/m	8:30PM	0.9%	2.0%	USD
31 DECEMBER 2024				
Manufacturing PMI	7:00AM	50.3	50.3	CNY
S&P/CS Composite-20 HPI y/y	7:30pm	4.1%	4.6%	USD
01 JANUARY 2025				
ALL MARKET HOLIDAY				
02 JANUARY 2025				
Unemployment Claims	7:00PM	220K	219K	USD
Final Manufacturing PMI	8:15 PM	48.3	48.3	USD
Crude Oil Inventories	9:30 PM			
03 JANUARY 2025				
ISM Manufacturing PMI	8:30 PM	48.3	48.4	USD
ISM Manufacturing Prices	8:30 PM	50.5	50.3	USD

Passion For Excellence

Contact us at :
info@signalexpertglobal.com



**SIGNAL
EXPERT
GLOBAL**
Passion for Excellence

COMEX RESEARCH REPORT

SIGNAL EXPERT GLOBAL LLP

DATE – 30 DEC 2024

DISCLAIMER

- SIGNAL EXPERT GLOBAL LLP comply with International Trade Council Compliance, So please cooperate in providing KYC & Risk Profiling to our employees.
- Dear clients, SIGNAL EXPERT GLOBAL LLP does not claim/give any assured/ guaranteed return, don't trade on personal calls, trade only in Company Research calls. Please beware of fraud calls/ sms & misguided advise.
- SIGNAL EXPERT GLOBAL LLP do not ask any client or any person to deposit money in any Employee Or any person's personal bank account details, so never deposit money in any Employee personal account.
- Trading in Comex / Forex / Any Financial Exchange market are always subjected to market risk, there is always high market risk involve. Please go through our website www.signalexpertglobal.com for further details.

Www.signalexpertglobal.com does not take any compensation of any kind whatsoever from any company that they mention on this website. All data and reports at **www.signalexpertglobal.com** are only information services for investors and are not individualized recommendations to buy or sell securities, nor offers to buy or sell securities. The publishers of reports, reviews and analysis under **www.signalexpertglobal.com** are not acting in any way to influence the purchase or sale of securities. The information provided is obtained from sources deemed reliable but is not guaranteed as to accuracy or completeness or as to the results obtained by individuals using such information. It is possible at this or some subsequent date, the publishers of reports, reviews and analysis at **www.signalexpertglobal.com** may own, buy or sell securities presented. Each user shall be responsible for the risks of their own investment activities and, in no event, shall **www.signalexpertglobal.com** , its publishers, employees, owners or investors, be liable for any losses or damages, monetary or otherwise, that result from actions taken after reading the contents of reports, reviews and analysis published on **www.signalexpertglobal.com** . The publishers recommend that anyone trading securities should do so with caution and consult with a broker and financial advisor before using any of our interpretation.